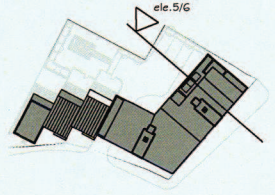


- MATERIAL SCHEDULE
1. natural patterned zinc rainscreen
  2. autumn russett sovereign stock facing brickwork by Baggenidge
  3. blue sovereign stock facing brickwork by Baggenidge
  4. aluminium windows ral 9024 (dark grey) with shallow square edge profile
  5. horizontal wrought cedar boarding
  6. simple powder coated metal railings ral9024 (dark grey), perimeter frame to be 45mm x 6mm flat framing with 30mm x 6mm square section posts at max. 100mm centres. top rail is to have a bolted half round capping in cedar finish
  7. polycarbonate sectional garage door with anodised frames ral9024 (dark grey) and panels
  8. glazed prefabricated canopy
  9. 7.5mm deep zinc shallow profile to top of wall



key

REVISIONS:  
 rev 1 by architect 2008 material information amended  
 rev 2 by jw 09 planning ppt presented prior to design review panel  
 rev 3 by jw 09 planning ppt amended prior to approval hearing

⑤ 1:100 elevation/section  
 page 129



⑥ 1:100 elevation/section through highfield court

Planning Set  
 CLIENT:  
 major link limited  
 PROJECT:  
 residential development  
 former kwik fit  
 360-364 london road  
 london cr4 3nd  
 DESCRIPTION:  
 elevations

**j+dw**  
 S.T.C. H.L.S.  
 head office:  
 the old stone meadows, 10 alphas st  
 alderbury, dorset, sp10 7pq  
 tel: 01823 26200 fax: 01823 266812  
 satellite office:  
 report: 5th floor, 126 caserton road  
 report, south wales, sp10 7pq  
 tel: 01823 26200 fax: 01823 266812  
 e-mail: info@jdwarchitects.co.uk  
 www.jdwarchitects.co.uk

DATE: 12/06/08  
 SCALE: 1:100  
 JOB DRAWING NO: **jw357 - 110**

Appeal Sections

This page is intentionally left blank